

BULL SALE

FIR RIVER LIVESTOCK



STONEGATE FARM

MARCH
16
2019

SASKATOON

GELBVIEH

Welcome

Welcome to the 19th annual Saskatoon Gelbvieh Bull and Female Sale. On offer this year is a strong group of functional, easy fleshing bulls. The bulls are a diversity of red and black, performance and calving ease bulls. Like in the past the bulls are of the highest quality that the breed has to offer. Selling alongside these Gelbvieh and Balancer bulls this year is a few excellent Angus bulls.

Join us March 16 for lunch and hospitality. As well join us March 15 for pre sale viewing of the bulls and hospitality. Visit with us prior to the sale and view the cattle at either of our ranches any time. If you are unable to attend the sale for any reason, another convenient option is to view and bid on the sale through DLMS.

We look forward to visiting with you sale day.

Sincerely

The Saskatoon Gelbvieh Bull and Sale Crew

STONE GATE FARM

Darrell & Leila Hickman
403/556-7262 or 780/581-4510

FIR RIVER LIVESTOCK

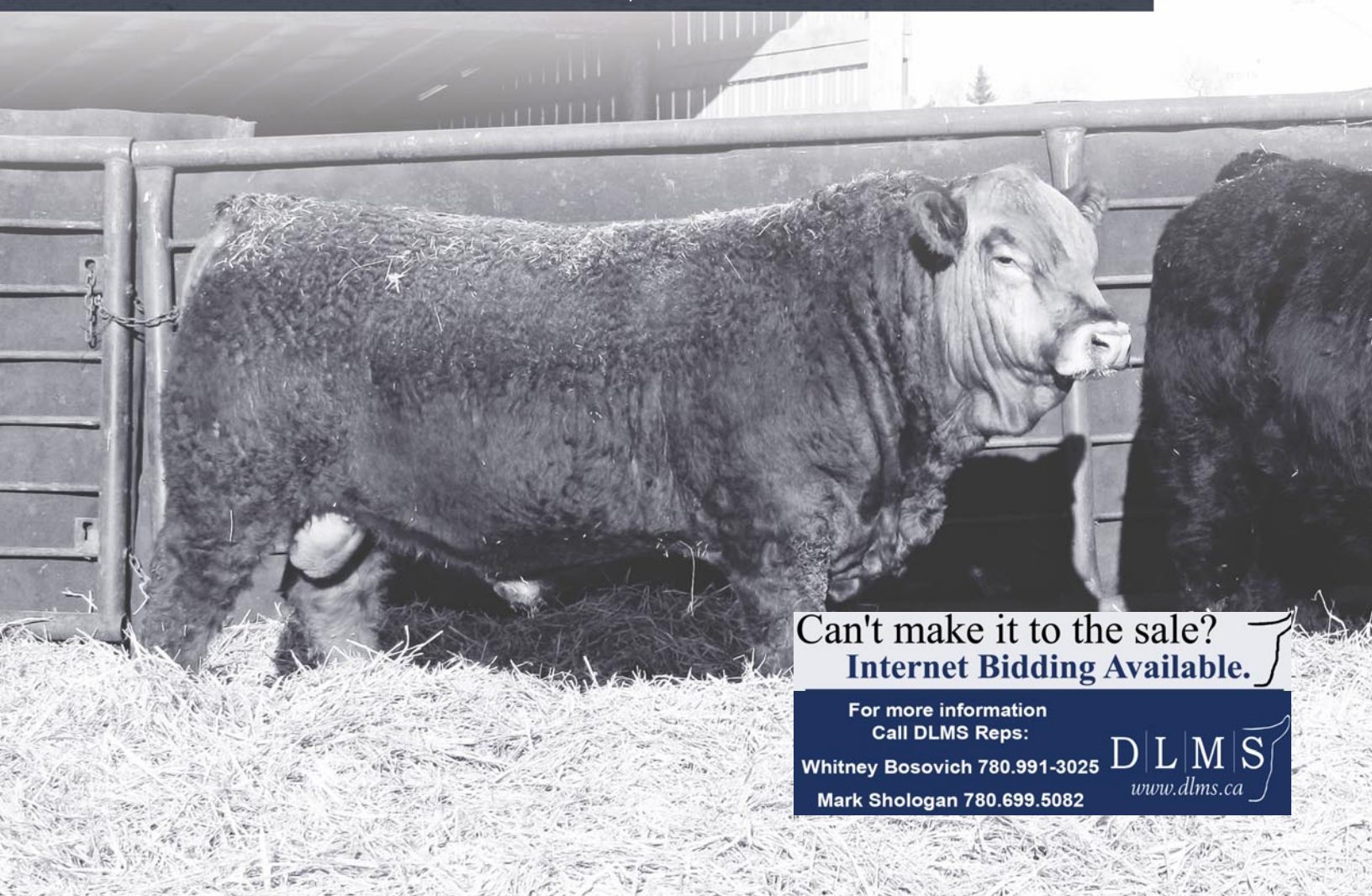
Darcy & Renee Hrebeniuk
Ph: 306/865-2929 Cell: 306/865-7859
and David Hrebeniuk
Ph: 306/865-6603

Saturday,
March 16, 2019

Saskatoon Livestock Sales

Saskatoon, SK • 1pm

Saskatoon Livestock Sales is located
10km west of Saskatoon
on Highway #14
(towards Bigger)



Can't make it to the sale?
Internet Bidding Available.

For more information
Call DLMS Reps:

Whitney Bosovich 780.991.3025

Mark Shologan 780.699.5082

DLMS
www.dlms.ca

Offering...

27 Gelbvieh Bulls

2 Angus Bulls

6 Fancy Open Heifers

Sale Day Phones:

306.865.7859 (Darcy)

780.581.4510 (Darrell)

306.865.6603 (Dave)

306.222.8210 (Kirk)

306. 382. 8088 (Saskatoon Livestock Sales)

Auctioneer:

Ryan Hurlburt 306.292.9812

Sale Consultant:

Kirk Hurlburt 306.222.8210

Ringman:

Mike Fleury 306.222.9526

Harvey Welter 306.227.8684

Sale Day Insurance:

Butler Byers - Rick Omelchenko - 306.441.0224

Videos are available to view at

- **www.dlms.ca**
- **www.gelbviehworld.com**
- **www.stonegatefarms.ca**

Pre-Sale Viewing & Hospitality

Plan to join us Friday March 15, 2019 for pre-sale viewing of bulls and hospitality



**ALL BULLS HAVE BEEN
SEMEN TESTED!!**

SALE BULLS

STONEGATE FARM

FIR RIVER LIVESTOCK

GELBVIEH

MARCH
16
2019

SASKATOON

Accommodations:**Best Western Blairmore - 306.242.2299**

306 Shillington Cres, Saskatoon SK

*Ask for the Saskatoon Gelbvieh Bull Sale Rate***Canadian Gelbvieh Assoc.****Breed Average EPD's**

CED	BW	WW	YW	MLK	TM	CEM
11	1.0	58	81	23	52	5

Alternative Accommodations:

Travelodge Hotel Saskatoon 306.424.8881

Riviera Motor Inn 306.242.7272

Days Inn 306.242.3297

Country Inn and Suites 306.934.3900

Best Western Royal Saskatoon 306.244.5552

General Information:

TERMS OF SALE: Are cash or cheque at par, payable to the clerks of the Sale on sale day. U S funds will be accepted at the current rate of exchange. No release will be given until satisfactory settlement has been made. Full payment shall constitute a final sale and then registration papers will be transferred.

HEALTH: All Sale cattle meet the Canadian Health standards. Foreign buyers are responsible for knowing the current Health standards of their country.

GUARANTEE: All Sale cattle are guaranteed under the terms and conditions of Sale as recommended by the Canadian Gelbvieh Association. Any issues must be reported in writing, within 6 months of sale time to the breeder and to be accompanied by veterinarian certificate. At no time will the breeder be liable for a credit more than the original purchase price.

MAIL BIDS: If you are unable to attend the Sale, but wish to make a purchase, please feel free to contact any of the sales staff or consignors and your order will be handled in a professional manner.

INSURANCE: Ownership commences to the purchaser as soon as the animal is sold. Insurance agents will be present sale day to look after your insurance requirements. We would suggest you buy full mortality and fertility insurance for your new bull. If you are unable to take your bull purchase home sale day, full insurance **MUST** be purchased. A fertile bull can lose the ability to settle cattle therefore, good management of your breeding bulls over all health is very important especially throughout the breeding season. Our warranties do not cover bull injuries or sickness not apparent on sale day.

Although every precaution will be taken to protect the safety and comfort of the buyers the consignors assume no responsibility in these matters and disclaims any liability, legal or otherwise, in the event of an accident or loss of property.

DELIVERY: Free delivery in Alberta and Saskatchewan. Any destination over 300 km is cost shared for delivery. Delivery will begin approx. April 1st at the seller's convenience. After April 15 \$4.00 a day charge will be added to feed the bulls. Bulls returning to the farms after the sale must be insured. Take \$100 off the purchase price if you take your bull home sale day.



FIR RIVER LIVESTOCK ♦



Darcy & Renee Hrebeniuk - Ph: 306/865-2929 Cell: 306/865-7859
 David Hrebeniuk - Ph: 306/865-6603
 Box 379, Hudson Bay, SK S0E 0Y0 • Email: firriver@explornet.com



www.gelbviehworld.com



GELBIEH SALE BULLS FIR RIVER LIVESTOCK



Herd sire candidate. Heavy haired, long and deep. Dam is a direct ATC 96E daughter and sire needs no introduction. All the guess work is taken out of this bull.

RETAINING 50% SEMEN INTEREST.

FRL FIR RIVER FOREMAN 317F

Double Polled :: Purebred 94 :: Bull :: Red

BW	ADJ WW	ADJ YW
92	708	

01/09/2018
FRL 317F
CDGV168433

SLC SWAGGER 105A ET

FRL FIR RIVER ALISA 853A ET

STON XTERMINATOR 7X
SLC PARKLAND 220U
JRI FULLY EXPOSED 270N83
ATC GOLD STAR 96E

CED	BW	WW	YW	MLK	TM	CEM
8	2.0	56	84	25	53	2

1



FRL FIR RIVER FORBIDDEN 319F ET

Double Polled :: Purebred 94 :: Bull :: Red

2

BW	ADJ WW	ADJ YW
95	709	

01/10/2018
FRL 319F
CDGV168409

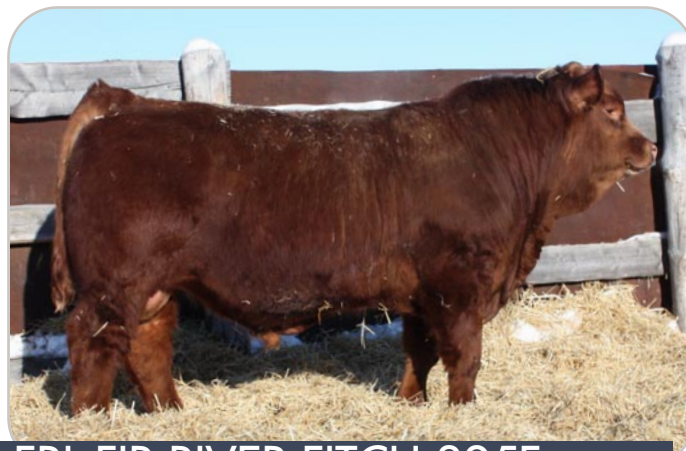
CED	BW	WW	YW	MLK	TM	CEM
10	2.0	59	84	21	50	3

RID R COLLATERAL 2R

DRT LONESOME LUCKY PENNY 7W

JCGR BAR GT FLASHBACK 410M ET
JCGR BAR GT LONI 27N ET
DRT SUPERB 16S
DRT HIGH SOCIETY 24S

Deep sided and long made bull. Look to this guy to raise the good ones. An ET calf. Dam is a deep bodied excellent uddered cow. Full sib is seeing herd sire duties at Twin View Livestock.



FRL FIR RIVER FITCH 325F

Double Polled :: Percentage 88 :: Bull :: Red

3

BW	ADJ WW	ADJ YW
80	721	

01/12/2018
FRL 325F
CDGV168380

CED	BW	WW	YW	MLK	TM	CEM
12	0.0	59	86	20	49	5

SLC ROAD TRIP 103B

FRL FIR RIVER CLASS 14D

CES DECKA ROADIE 81T
CK BLACK GOLD 119Z
JRI TOP RECRUIT 254U82
FRL FIR RIVER CLASSY 31Y

Calving ease, Road Trip sired bull. Dark red, lots of hair and scrotal.



Another outstanding Santiago son. Dam always produces the good ones. A deep bodied bull with lots of scrotal.

FRL FIR RIVER FUSION 310F

Double Polled :: Percentage 88 :: Bull :: Red

BW ADJ WW ADJ YW
90 691

01/05/2018
FRL 310F
CDGV168379

JRI SANTIAGO 37C31

FRL FIR RIVER JULIE 525Y

CED	BW	WW	YW	MLK	TM	CEM
11	0.8	56	80	24	52	2

JRI TOP PRODUCER 282Z3
JRI MS BLACK IMPULSE 37Z3
FRL FIR RIVER THORTON 28W
ULL MS JULIE 15R

4



FIR RIVER FIREWALL FRL 355F

Double Polled :: Purebred 94 :: Bull :: Red

5

BW ADJ WW ADJ YW
95 796

02/05/2018
FRL 355F
CDGV168400

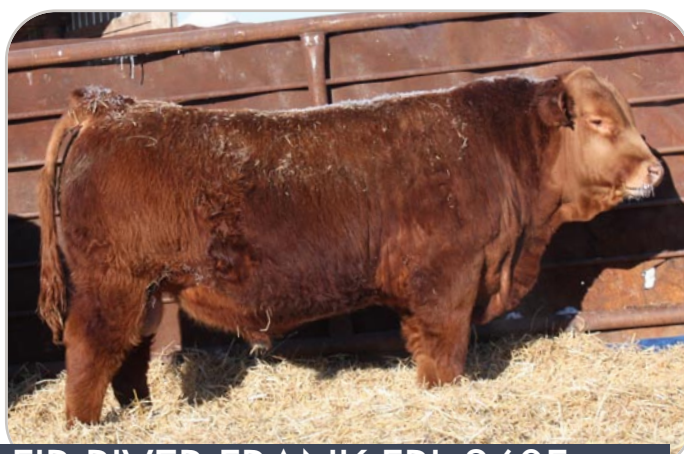
CED	BW	WW	YW	MLK	TM	CEM
13	1.2	60	87	22	51	8

SLC OUTBACK 89Y

FRL FIR RIVER MS PABST

CES DECKA OUTBACK 75S
SLC LADY 238U
EGL PABST L011 ET
FRL FIR RIVER WHITNEY 62W

Herd sire prospect. Easy fleshing, long made, eye appealing bull. Dam is a beautiful front pasture cow.



FIR RIVER FRANK FRL 360F

Double Polled :: Purebred 94 :: Bull :: Red

6

BW ADJ WW ADJ YW
98 816

02/09/2018
FRL 360F
CDGV168402

CED	BW	WW	YW	MLK	TM	CEM
12	2.1	57	86	23	51	5

SLC OUTBACK 89Y

DVE DAVIDSON MS 24/7 34Z

CES DECKA OUTBACK 75S
SLC LADY 238U
FLAD 24/7 34X
DVE DAVIDSON MS B4 61U

Herd sire prospect. A real thick made, deep bodied bull. Look to this guy to sire the good ones.



Herd sire prospect. Soggy made, long, excellent haired bull. These Genuine sired calves continue to impress. This guy will be easy to find sale day.

FIR RIVER FLAME FRL 358F

Double Polled :: Purebred 94 :: Bull :: Red

BW	ADJ WW	ADJ YW
90	801	

02/07/2018
FRL 358F
CDGV168401

DVE DAVIDSON GENUINE 194D

JRI MS PARTY GIRL 307A80

DVE DAVIDSON JUMPSTART 44X
DVE DAVIDSON MS MAMBO 32Y
POP A TOP 197T83
MS BABY CAKES 307U70

CED	BW	WW	YW	MLK	TM	CEM
13	-0.4	56	78	23	52	4

7



FIR RIVER FLEX FRL 354F

Double Polled :: Purebred 94 :: Bull :: Red

8

BW	ADJ WW	ADJ YW
90	818	

02/05/2018
FRL 354F
CDGV168399

CED	BW	WW	YW	MLK	TM	CEM
9	2.3	61	87	26	57	3

DVE DAVIDSON GENUINE 194D

FRL FIR RIVER SURI

Deep bodied, easy fleshing, excellent haired power bull. Dam is a model cow. Look to this bull to produce the good ones.

DVE DAVIDSON JUMPSTART 44X
DVE DAVIDSON MS MAMBO 32Y
STON XTERMINATOR 7X
FRL FIR RIVER SURI 46S



FRL FIR RIVER FUGITIVE 348F

Double Polled :: Purebred 94 :: Bull :: Red

9

BW	ADJ WW	ADJ YW
95	662	

01/28/2018
FRL 348F
CDGV168396

CED	BW	WW	YW	MLK	TM	CEM
10	1.9	64	88	26	59	4

DVE DAVIDSON GENUINE 194D

FRL FIR RIVER OZARK LADY

Stylish, good haired bull. Dam always produces the good ones.

DVE DAVIDSON JUMPSTART 44X
DVE DAVIDSON MS MAMBO 32Y
CIRS ALTERNATING CURRENT 7RU
VV OZARK LADY 33P



Moderate made easy flesh-
ing bull. Dam is a stylish,
good uddered, front pasture
cow.

FRL FIR RIVER FLASH 351F

Double Polled :: Balancer 75 :: Bull :: Red

BW	ADJ WW	ADJ YW
90	688	

01/30/2018
FRL 351F
CDGV168434

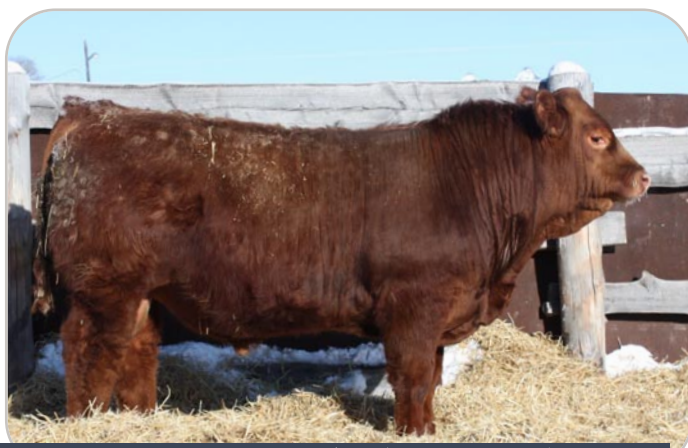
SUN OLD SCHOOL 77B

FRL FIR RIVER BREA 234X ET

SLC OLD SCHOOL 120W
RED SFH PRIDE 1U
JRI FULLY EXPOSED 270N83
ATC GOLD STAR 96E

10

CED	BW	WW	YW	MLK	TM	CEM
8	1.9	57	86	24	52	2



FRL FIR RIVER FINALIZE 349F

Double Polled :: Purebred 94 :: Bull :: Red

11

BW	ADJ WW	ADJ YW
100	804	

01/29/2018
FRL 349F
CDGV168397

CED	BW	WW	YW	MLK	TM	CEM
9	2.1	63	86	24	55	3

DVE DAVIDSON GENUINE 194D

FRL FIR RIVER MS RECRUIT

Long made, deep ribbed power bull. This guys calves will push the scales down.

DVE DAVIDSON JUMPSTART 44X
DVE DAVIDSON MS MAMBO 32Y
JRI TOP RECRUIT 254U82
FRL FIR RIVER SUSIE Q 52R ET



FRL FIR RIVER OLD SCHOOL 352F

Double Polled :: Balancer 75 :: Bull :: Red

12

BW	ADJ WW	ADJ YW
90	634	

02/02/2018
FRL 352F
CDGV168441

CED	BW	WW	YW	MLK	TM	CEM
8	2.5	59	86	24	53	3

SUN OLD SCHOOL 77B

FRL FIR RIVER KARI 104C ET

Moderate made and easy fleshing. Dark red Balancer bull.

SLC OLD SCHOOL 120W
RED SFH PRIDE 1U
STON XTERMINATOR 7X
EV KARI'S HUMALONG 8W

FRL FIR RIVER FRED 373FDouble Polled :: Purebred 94 :: Bull :: Red **13**

BW	ADJ WW	ADJ YW	
90	631		02/25/2018
			FRL 373F
			CDGV168403

CED	BW	WW	YW	MLK	TM	CEM
7	2.9	65	93	24	57	1

DVE DAVIDSON GENUINE 194D**FRL FIR RIVER MISS EXPOSED**

Long made, big ribbed bull.

DVE DAVIDSON JUMPSTART 44X
DVE DAVIDSON MS MAMBO 32Y
JRI FULLY EXPOSED 270N83
FRL ANTEBELLUM 278X

FRL FIR RIVER FLINT 393FDouble Polled :: Purebred 94 :: Bull :: Red **14**

BW	ADJ WW	ADJ YW	
98	661		03/22/2018
			FRL 393F
			CDGV168438

CED	BW	WW	YW	MLK	TM	CEM
9	1.9	64	92	28	59	2

DVE DAVIDSON GENUINE 194D**FRL FIR RIVER SURI 684Z ET**

Well made big boned bull.

DVE DAVIDSON JUMPSTART 44X
DVE DAVIDSON MS MAMBO 32Y
JRI FULLY EXPOSED 270N83
FRL FIR RIVER SURI 46S

FRL FIR RIVER FUTURE 345FDouble Polled :: Purebred 94 :: Bull :: Red **15**

BW	ADJ WW	ADJ YW	
90	667		01/26/2018
			FRL 345F
			CDGV168384

CED	BW	WW	YW	MLK	TM	CEM
10	1.0	59	80	24	53	4

DVE DAVIDSON GENUINE 194D**VV XTRA KEEN 154X**

Deep ribbed bull who is sired by our new herd sire Genuine.

DVE DAVIDSON JUMPSTART 44X
DVE DAVIDSON MS MAMBO 32Y
VCR SIX PACK 25S
HL MISS CINNAMON 1P

FRL FIR RIVER FIREWALL 336FDouble Polled :: Percentage 88 :: Bull :: Red **16**

BW	ADJ WW	ADJ YW	
94	722		01/19/2018
			FRL 336F
			CDGV168382

CED	BW	WW	YW	MLK	TM	CEM
9	2.2	60	78	24	54	4

DVE DAVIDSON GENUINE 194D**LCR YESIL 119Y**

Dark red, excellent haired, long made bull.

DVE DAVIDSON JUMPSTART 44X
DVE DAVIDSON MS MAMBO 32Y
LCR STAR PROSPECT 155S
LCR NADELE 19N

**FRL FIR RIVER SANTIAGO 309F**Double Polled :: Percentage 88 :: Bull :: Black **17**

BW	ADJ WW	ADJ YW	
83	575		01/05/2018
			FRL 309F
			CDGV168378

CED	BW	WW	YW	MLK	TM	CEM
10	1.9	57	76	21	50	2

JRI SANTIAGO 37C31**FRL ANTEBELLUM 278X**

Calving ease Santiago sired son. Excellent haired, lots of scrotal, out of a excellent producing Dam.

JRI TOP PRODUCER 282Z3
JRI MS BLACK IMPULSE 37Z3
DCC RIKHARDS RED 22R
TSCC TWIN STAR MISS NADIA 770

**FRL FIR RIVER RENOWN 315F**Double Polled :: Balancer 50 :: Bull :: Black **18**

BW	ADJ WW	ADJ YW	
89	731		01/07/2018
			FRL 315F
			CDGV168413

CED	BW	WW	YW	MLK	TM	CEM
10	1.1	80	125	22	62	4

S A V RENOWN 3439**FRL FIR RIVER SABRINA 420Y**

Long made, deep bodied balancer bull. This bulls dam consistently produces quality bulls year after year.

RITO 707 OF IDEAL 3407 707S
S A V BLACKCAP MAY 4136
ZTM MCCOY 34R VERDICT 83U
FRL FIR RIVER SABRINA 6U



Herd sire ! One of the most complete bulls in the sale. Big footed, heavy muscled, this is the big, deep, soggy bull that we have all been looking for.

RETAINING 50% SEMEN INTEREST.

FRL FIR RIVER FLAGSHIP 305F

Double Polled :: Balancer 75 :: Bull :: Black

BW	ADJ WW	ADJ YW
90	844	

01/05/2018
FRL 305F
CDGV168377

DVE DAVIDSON GENUINE 194D

DVE DAVIDSON JUMPSTART 44X
DVE DAVIDSON MS MAMBO 32Y
YY RED YY RAMBLER 322N
ULL MS OLIVIA 14M

ULL RED OLIVIA 7W

19

CED	BW	WW	YW	MLK	TM	CEM
10	0.8	58	83	24	53	5



FRL FIR RIVER FESTIVAL 337F

Double Polled :: Purebred 94 :: Bull :: Black

20

BW	ADJ WW	ADJ YW
94	759	

01/19/2018
FRL 337F
CDGV168383

DVE DAVIDSON GENUINE 194D

SA BIRCH'S AUDREY 133B

DVE DAVIDSON JUMPSTART 44X
DVE DAVIDSON MS MAMBO 32Y
VV YOICKS 107Y
SA BIRCH'S AUDREY 175W

A bull with lots of muscle shape and base width. Excellent bull out of a consistent producing dam.



FRL FIR RIVER FEVER 327F

Double Polled :: Percentage 88 :: Bull :: Black

21

BW	ADJ WW	ADJ YW
85	683	

01/12/2018
FRL 327F
CDGV168381

SLC ROAD TRIP 103B

FRL FIR RIVER MISS ROCKER

Calving ease bull. Long made and deep.

CES DECKA ROADIE 81T
CK BLACK GOLD 119Z
PCCI EDISON 3222A
FRL FIR RIVER MISS ROCKER

CED	BW	WW	YW	MLK	TM	CEM
12	1.1	62	91	20	51	6



Soft made, stylish good haired bull.

FRL FIR RIVER FUEL 339F

Double Polled :: Percentage 88 :: Bull :: Black

BW 90 ADJ WW 720 ADJ YW
01/21/2018
FRL 339F
CDGV168398

DVE DAVIDSON GENUINE 194D

DVE DAVIDSON JUMPSTART 44X
DVE DAVIDSON MS MAMBO 32Y
STON XTERMINATOR 7X
ULL RED CHERRY 5W

22

CED	BW	WW	YW	MLK	TM	CEM
8	1.7	58	81	24	53	2

FRL FIR RIVER CHERRY



An excellent angus bull.
Long made, deep and styl-
ish. Sired by the great SAV
Renown.

FIR RIVER RENOWN 322F

Double Polled :: Angus :: Bull :: Black

BW 90 ADJ WW ADJ YW
01/11/2018
FIR 322F
CAA 2015038

S A V RENOWN 3439

RITO 707 OF IDEAL 3407
S A V BLACKCAP MAY 4136
RED ROYAL HI HO 112M
RED PASQUIA FAYET 12N

23

CED	BW	WW	YW	MLK	TM	CEM
-2.5	3.2	46	82	21	44	1.5

RED PASQUIA FAYET 53S

SLC SWAGGER 105A ET

Polled :: Purebred :: Bull :: Red Ref

BW	ADJ WW	ADJ YW	04/19/2013
87	796		SLC 105A
			CDGV150281

CED	BW	WW	YW	MLK	TM	CEM
9	2.5	59	87	21	50	3

STON XTERMINATOR 7X

SLC PARKLAND 220U

STON UNDER RATED 7U
STON MISS JULIE 13U
SLC MERV 12N
SLC COPPER PARKLAND 139G



SLC OUTBACK 89Y

Polled :: Percentage 88 :: Bull :: Red Ref

BW	ADJ WW	ADJ YW	04/24/2011
72	747	1213	SLC 89Y
			CDGV147860

CED	BW	WW	YW	MLK	TM	CEM
13	1.6	56	84	21	49	8

CES DECKA OUTBACK 75S

SLC LADY 238U

CES DECKA PRECISION 144P
CES DECKA HARPER 150L
SLC MASTER PLAN 134N
SLC STAR 45P



SLC ROAD TRIP 103B

Polled :: Purebred 94 :: Bull :: Red Ref

BW	ADJ WW	ADJ YW	04/27/2014
79	910	1470	SLC 103B
			CDGV153842

CED	BW	WW	YW	MLK	TM	CEM
14	-0.3	62	96	21	52	6

CES DECKA ROADIE 81T

CK BLACK GOLD 119Z

SLC ROADHAMMER 1R
CES DECKA LATOYA 136P
LC OUTBACK 144W
JLD XTRA TOASTY 42X



SUN OLD SCHOOL 77B

Polled :: Balancer 50 :: Bull :: Red Ref

BW	ADJ WW	ADJ YW	02/16/2014
99	637	1190	SUN 77B
			CDGV158269

CED	BW	WW	YW	MLK	TM	CEM
8	2.0	60	87	18	48	4

SLC OLD SCHOOL 120W

RED SFH PRIDE 1U

VCR PLD VALE TOPPER 2T ET
SFL SLC SUE 325P
RED BRYLOR SDL SQUALL 230S
RED FINE LINE PRIDE 24S





DVE DAVIDSON GENUINE 194D

Polled :: Purebred 94 :: Bull :: Black Ref

BW	ADJ WW	ADJ YW	03/08/2016
86	804	1362	DVE 195D
CDGV158730			

CED	BW	WW	YW	MLK	TM	CEM
9	1.9	65	88	26	58	3

DVE DAVIDSON JUMPSTART 44X

DVE DAVIDSON MS MAMBO 32Y

STON SECRET WEAPON 6S
DVE DAVIDSON MS JIM 36R
DRT MAMBO 32T
LCS BIG SKY GAL 489J



JRI SANTIAGO 37C31

Polled :: Percentage 88% :: Bull :: Black Ref

BW	ADJ WW	ADJ YW	03/28/2015
93	756	1246	JRI 37C31
AMGV1315139			

CED	BW	WW	YW	MLK	TM	CEM
12	0.4	56	74	20	48	0

JRI PEDRO 207Z74

JRI MS BLACK IMPULSE 37Z3

JRI POP A TOP 197T83
JRI MS EXPOSURE 207N64
JRI SECRET INSTINCT 254U83
JRI MS COWGIRL TUFF 37X2



S A V RENOWN 3439

Polled :: Angus :: Bull :: Black Ref

BW	ADJ WW	ADJ YW	01/07/2013
			3439
AMAN17633839			

CED	BW	WW	YW	MLK	TM	CEM
11	0.3	85	140	19	62	3

RITO 707 OF IDEAL 3407 7075

S A V BLACKCAP MAY 4136

R R RITO 707
IDEAL 3407 OF 1418 076
S A V 8180 TRAVELER 004
S A V MAY 2397



STONE GATE FARM



Darrell & Leila Hickman
 RR#, Sundre TOM 1X0
 780/581-0077 or 780/581-4510
 darrell.ddhickman@gmail.com • www.stonegatefarms.ca



www.stonegatefarms.ca





Foreman 12F is a smooth, well balanced Balancer herd sire prospect. He is sired by our Edison Balancer bull from South Dakota who has sired several good bull prospects over the last number of years. His mother is a tremendous Angus cow from Hamilton farms who is a Connealy Consensus daughter. The maternal strength behind this pedigree is second to none, so if you are looking for a bull to add a touch of maternal this is your guy. He employees a puppy dog temperament, and is as thick as any bull in the pen.

STON FOREMAN 12F

Polled :: Balancer :: Bull :: Black

24

BW	ADJ WW	ADJ YW	01/29/2018
81	609	1209	STON 12F
Pending			

PCCI EDISON 3222A

DLW EDISON 6718X
WVR PLEASURE 427P
CONNEALY CONSENSUS 7229
HF ERICA 101Y

HF ERICA 200A

CED	BW	WW	YW	MLK	TM	CEM
12	1.8	59	90	20	49	



STON FALCON 7F

Polled :: Balancer :: Bull :: Red

25

BW	ADJ WW	ADJ YW	01/25/2018
73	643	1237	STON 7F
Pending			

RED LAZY MC CC DETOUR 2W

RED RMJ REDMAN 1T
RED LAZY MC BESS 12S
DEG PESO 286P
TIP MISS MOLLY 44M

VV MISS MOLLY 118S

Falcon is a Balancer embryo calf resulting from Red Angus sire Red Lazy MC Detour 2W and VV Molly 118S. Falcon is a great red option if you are looking for a heifer bull, as he has easy calving genetics on both sides of his pedigree. Falcon will also sire calves that have growth, and tremendous muscle capacity. His dark red color should also consistently carry forward and leave a calf crop that is easy to market.



STON FIGURE EIGHT 3F

Polled :: Balancer :: Bull :: Black

26

BW	ADJ WW	ADJ YW	01/21/2018
78	706	1287	STON 3F
Pending			

CED	BW	WW	YW	MLK	TM	CEM
4	3.9	61	95	29	32	

DMM INTERNATIONAL 54D

SAV INTERNATIONAL 2020
DMM BLACKBIRD 105A
EV HUMDINGER 119M
ATC GOLD STAR JULIE 80J

STON JULIE 13U

Figure Eight is a tremendous sire candidate. The sheer power this Balancer individual possesses, will make you set up and take notice as he will be easy to find sale day. He is sired by none other than DMM International 54D, the tremendous Angus sire who has taken the show road by storm the last few years but more importantly has become a pre-potent sire! The mass, hair and style he throws are as consistent as any bull of any breed. Figure Eight was mothered by our go to powerhouse female, STON Julie 13U. She is the mother of numerous herdsires from previous years and has certainly left her mark within the industry. If you are looking for a performance bull that will sire pounds of marketable product, this guy should be on your shortlist.



Warrior is an ultra thick Balancer bull who will sire a great set of steers that should feed very well. He is sired by the Edison Balancer bull, and a larger framed Angus cow from Ring Creek Farms. This Angus side of his pedigree has a very strong maternal background, with as good of feet and udders as you could make. He would be homozygous black and polled by pedigree and the thickness and hair coat have always been an asset of this sire group.

STON FAMOUS WARRIOR 15F

Homo Polled :: Balancer :: Bull :: Homo Black

BW	ADJ WW	ADJ YW
84	674	1278

02/02/2018
STON 15F
Pending

PCCI EDISON 3222A

K LAZY T BAMBI 132'14

DLW EDISON 6718X
WVR PLEASURE 427P
RING CREEK BLACK CAT 111Y
BAMBI OF RING CREEK 127Y

27

CED	BW	WW	YW	MLK	TM	CEM
12	1.8	59	90	20	49	

STON FINAL DESTINATION 8F

Polled :: Balancer :: Bull :: Black 28

BW	ADJ WW	ADJ YW
88	608	1264

01/27/2018
STON 8F
Pending

CED	BW	WW	YW	MLK	TM	CEM
9	3.3	60	88	24	54	

DMM INTERNATIONAL 54D

SAV INTERNATIONAL 2020
DMM BLACKBIRD 105A
EV GEM DANDY 72T
JBM PARADEE 14N

STON MISS PARADEE 30A ET

Final Destination is a Balancer bull who has the performance and maternal background to complement most operations. He is a larger framed bull, who comes in a thick and well haired package. He was mothered by a tremendous Paradee cow family member, who has delivered several bulls and a tremendous replacement female to the herd. Again, he is sired by DMM International 54D and has the cow family to back him up.

Can't make it to the sale?
Internet Bidding Available.

To view this sale visit www.dlms.ca, Fill out the registration form located under registration and sign-up for your free user account and select a username and password.

BIDDERS - To be approved as a bidder, Log in to dlms.ca and click BUYER APPROVAL tab, select the sale you are interested in bidding at and click sign up.

For more information
Call DLMS Reps:

Whitney Bosovich 780.991-3025
Mark Shologan 780.699.5082

DLMS
www.dlms.ca



STON FIRST RATE 2F

Polled :: Angus :: Bull :: Black 29

BW	ADJ WW	ADJ YW
81	688	1218

01/15/2018
STON 2
Pending

CED	BW	WW	YW	MLK	TM	CEM
1.5	2.1	49	80	19	44	7.0

VISION UNANIMOUS 1418

OAV LAURA 25T

VISIONTOPLINE ROYAL STOCKMAN
VISION EDELLA 665
LOOKOUT PACER 437P
FAIRLTA LAURA ENCORE 15M

Our single Angus offering this year is an embryo calf from Vision Unanimous and a stellar cow, OAV Laura 25T owned by Lakeland College. We purchased a set of embryos and this resulting calf is a great example of the breed! This mating has worked for several great cattlemen across Western Canada. Average birth weights, coupled with tremendous performance to weaning will guarantee you payweight with his calves. Expect thick, deep bodied calves with hair....the kind feeders love to have! As a bonus, the females will certainly make beautiful replacements. This is the exact type of Angus that works so well on these exotic based cows. This guy will make a great herd sire, and could certainly develop a Balancer program that would make the neighbors jealous.



PCCI EDISON 3222A

Polled :: Balancer 50 :: Bull :: Black Ref

BW	ADJ WW	ADJ YW	04/04/2013
80		778	PCCI A3222
			AMGV1262613

CED	BW	WW	YW	MLK	TM	CEM
13	1.2	72	98	15	51	7

DLW EDISON 6718X

WVR PLEASURE 427P

CTR GOOD NIGHT 715T
DLW MS KINGPIN 6718S
BON VIEW NEW DESIGN 878
WVR JULEP 957J



DMM INTERNATIONAL 54D

Polled :: Angus :: Bull :: Black Ref

BW	ADJ WW	ADJ YW	02/12/2016
92			DMM 54D
			CAA1922656

CED	BW	WW	YW	MLK	TM	CEM
-12	6.4	67	107	23	57	-4.0

S A V INTERNATIONAL 2020

DMM BLACKBIRD 105A

S A V HARVESTOR 0338
S A V EMBLYNETTE 5483
GUMBO GULCH CREED 94S
SOUTHERN OX BLACKBIRD 12J



VISION UNANIMOUS 1418

Polled :: Angus :: Bull :: Black Ref

BW	ADJ WW	ADJ YW	01/22/2011
			IMP 1418Y
			CAA1701532

CED	BW	WW	YW	MLK	TM	CEM
1.0	3.3	73	126	14	51	4.0

VISIONTOPLINE ROYAL STOCKMAN

VISION EDELLA 665

GAMBLES ROYAL FLUSH
LAGRAND PRIDE 7140
BOYD ON TARGET 1083
VISION EDELLA 337



RED LAZY MC CC DETOUR 2W

Polled :: Red Angus :: Bull :: Red Ref

BW	ADJ WW	ADJ YW	01/15/2009
89	768	1297	LDEL 2W
			CAA1494226

CED	BW	WW	YW	MLK	TM	CEM
9.0	-0.9	33	54	23	40	6.0

RED RMJ REDMAN 1T

RED LAZY MC BESS 12S

RED 5L NORSEMAN KING 2291
CROWFOOT KURUBA 4033P
RED LAZY MC SMASH 41N
RED LAZY MC BESS 73N

Feature Open Replacement Females!

FRL FIR RIVER MISS BIZZ 313F

Double Polled :: Balancer 50 :: Female :: Black **30**

BW ADJ WW ADJ YW
85 01/07/2018
FRL 313F
CDGV168440

CED	BW	WW	YW	MLK	TM	CEM
14	-0.6	61	91	21	52	8

S A V BISMARCK 5682

FRL FIR RIVER JULIE 3D ET

G A R GRID MAKER
S A V ABIGALE 0451
JRI HEAVY EQUIPMENT 125M3
AR JULIE 14J

Excellent Balancer heifer sired by SAV Bismark. These Balancer heifers will make an excellent addition to any herd.

FRL FIR RIVER MISS B 321F

Double Polled :: Balancer 50 :: Female :: Black **31**

BW ADJ WW ADJ YW
88 01/11/2018
FRL 321F
CDGV168439

CED	BW	WW	YW	MLK	TM	CEM
14	-0.4	60	88	22	52	8

S A V BISMARCK 5682

FRL FIR RIVER SUMMIT 29D

G A R GRID MAKER
S A V ABIGALE 0451
JRI TOP RECRUIT 254U82
FRL FIR RIVER SUMMIT 31W ET

Excellent haired and stylish. Sired by SAV Bismark

FRL FIR RIVER DAZZLE 323F

Double Polled :: Balancer 50 :: Female :: Black **32**

BW ADJ WW ADJ YW
83 01/11/2018
FRL 323F
CDGV168414

CED	BW	WW	YW	MLK	TM	CEM
15	-1.0	66	97	19	52	9

S A V BISMARCK 5682

FRL FIR RIVER DAZZLE 38D

G A R GRID MAKER
S A V ABIGALE 0451
PCCI PCCI EDISON 3222A
FRL FIR RIVER DAZZLE 418Y

Stylish and thrifty. These Bismark sired heifers are hard to part with.

FRL FIR RIVER DAZZ 342F

Double Polled :: Purebred 94 :: Female :: Red **33**

BW ADJ WW ADJ YW
88 01/22/2018
FRL 342F
CDGV168405

CED	BW	WW	YW	MLK	TM	CEM
8	2.0	61	89	27	58	1

DVE DAVIDSON GENUINE 194D

FRL FIR RIVER DAZZLE

DVE DAVIDSON JUMPSTART 44X
DVE DAVIDSON MS MAMBO 32Y
JRI FULLY EXPOSED 270N83
DVE DAVIDSON MS DAZZEL 6R

Excellent heifer that will make a real good mama cow.

FRL FIR RIVER QUEENIE 374F

Double Polled :: Purebred 94 :: Female :: Red **34**

BW ADJ WW ADJ YW
90 02/26/2018
FRL 374F
CDGV168407

CED	BW	WW	YW	MLK	TM	CEM
8	2.0	60	86	27	57	1

DVE DAVIDSON GENUINE 194D

FRL FIR RIVER QUEENIE

DVE DAVIDSON JUMPSTART 44X
DVE DAVIDSON MS MAMBO 32Y
JRI FULLY EXPOSED 270N83
DVE DAVIDSON PETERBILT 7N

Good haired and deep bodied.

FRL FIR RIVER MS OUTBACK 378F

Double Polled :: Purebred 94 :: Female :: Red **35**

BW ADJ WW ADJ YW
89 02/25/2018
FRL 378F
CDGV168406

CED	BW	WW	YW	MLK	TM	CEM
12	1.6	57	83	24	52	5

SLC OUTBACK 89Y

FRL FIR RIVER MISS RECRUIT

CES DECKA OUTBACK 75S
SLC LADY 238U
JRI TOP RECRUIT 254U82
EV KARI'S HUMALONG 8W

Stylish, thick made, big bodied heifer.

S A V BISMARCK 5682

Polled :: Angus :: Bull :: Black **Ref**

BW ADJ WW ADJ YW
5682 02/01/2005
CDAN1369591

CED	BW	WW	YW	MLK	TM	CEM
18	-2.2	66	102	21	54	11

G A R GRID MAKER

S A V ABIGALE 0451

IMP G D A R TRAVELER 044
G A R PRECISION 2536
SCHOENES FIX IT 826
S A V ABIGALE 6062



GELBVIEH

MARCH

16
2019

SASKATOON

STONE GATE FARM

FIR RIVER LIVESTOCK

SALE

BULL

Saskatoon
Gelbvieh Breeders
RR#1
Sundre, AB
TOM 1X0



Time Sensitive Material

